



RED-LIGHT AREA MAPPING:

# KAMATHIPURA

2021

## About Prerana

Prerana is a civil society organization that started working in the Red-Light Areas (RLA) of Mumbai in 1986 first with a view to eliminate inter-generational trafficking i.e. trafficking of the children of the sex trafficked prostituted women into the sex trade, its allied activities or exploitative labor. To achieve this, Prerana evolved several path-breaking interventions, piloted them, evolved a success story out of each intervention, and disseminated them widely to facilitate their mainstreaming. Prerana expanded the scope of its intervention to address the issues of the prostituted women of the RLAs specially to fight violence against them and to protect their legal and human rights.

## About Kamathipura

Kamathipura is an RLA in the India's commercial capital, Mumbai. The area spans across 14 congested lanes. The buildings in the RLA which contain numerous brothels are old and have extremely dilapidated infrastructures and superstructures. The walls of these buildings are covered in red-colored stains of the sputum thrown after chewing betel nut paan which is a common habit among the residents and visitors. While previously the entire area functioned as an RLA, at present (as of 2020) **Lane no. 1, 7, 8, 9, 10, 11, 12, 13, and 14** have brothels functioning out of it along with the brothels on the main **Sukhalaji Street**.

The brothels are interspersed with a variety of shops - from restaurants to *paan*-cigarette joints and liquor stores. The area also has quacks (unlicensed medical practitioners) mostly claiming to be specialized in treating sexually transmitted diseases. Previously the area also housed several video parlors that openly played X-rated films, and would supply X-rated films, video players, (and TV sets if needed) to the brothels on demand.

The Kamathipura RLA is not a neighborhood, community nor a colony of a typical mainstream society. In the night, it is littered with a large number of unfamiliar faces desperately seeking sexual pleasure from the women and transgenders of the RLA.

Kamathipura being very close to the commercial heart of Mumbai has caught the attention of the fast-growing commercial establishments, housing sectors and thus the land sharks. It has been seen widely that as the city grows so grows the sex trade. However, since the traditional RLAs in Mumbai have severe limits to their expansion the sex trade grows by dispersal. The sex trade in Mumbai began growing in different parts of the city in a dispersed manner. As the area was close to the heart of the city there was a definite change of hands from brothels to commercial establishments. Since 2007, Prerana has noticed that while the total volume of the sex trade is believed to have increased in the city, the sex trade in the RLAs certainly decreased.

# Services in the Red Light Areas

## Night Care Centers (NCC)

The Night Care Center program was initiated as a response to an expressed need for the safety and well-being of the children of the prostituted women. The NCC is a safe shelter, located in the red-light area where children are taken care of so that they are away from the red-light areas during the dangerous night hours when their mothers are soliciting. The NCC provides services such as – protected shelter, wholesome nutrition, health check-ups and referrals, mental health support, education support, safe play options, safe sanitation options, along with opportunities for skills development, awareness sessions, and an overall platform for holistic personality development and growth.

The NCCs have a comprehensive nutrition and health component that adopts a holistic and comprehensive approach to service delivery. Carefully planned nutritious meals are served to children four times a day (six times during Prerana's Day to Day Summer Camp). The health and medical services have a systematic process that includes a complete general health check-up, periodic follow-ups, and end-to-end support for the management of specific medical conditions.

Apart from this, our NCC teams also work to enable access to social security documents like Aadhar cards and ration cards, access to public distribution systems, hold meetings with the mothers on various issues and concerns related to their ( including their health) and their children's wellbeing. At present, Prerana runs four NCCs, which are located in/near the red-light areas of Kamathipura (two NCCs), Falkland Road, and Vashi-Turbhe Stores.

## Institutional Placement Programme (IPP)

IPP was evolved in consultation with the mothers in the red-light area. Mothers who feel their children aren't safe in the brothels, and in some cases, children themselves who express their safety concerns are referred to the Child Welfare Committee and then placed into child care institutions. These mothers want to de-link their children from the traumatizing exposures of RLAs and place them in long-term residential care and protection. At present, IPP is a structured intervention that involves collaborations with the government and non-government mechanisms to ensure successful protection and rehabilitation of vulnerable and at-risk children. The IPP program is run across all the three redlight areas we work in.

## Educational Support Programme (ESP)

ESP is an intervention that caters to all educational needs of children in the NCCs – curricular, co-curricular, or extracurricular. The team keeps a track of the progress made by the children at their respective educational institutions by visiting their schools

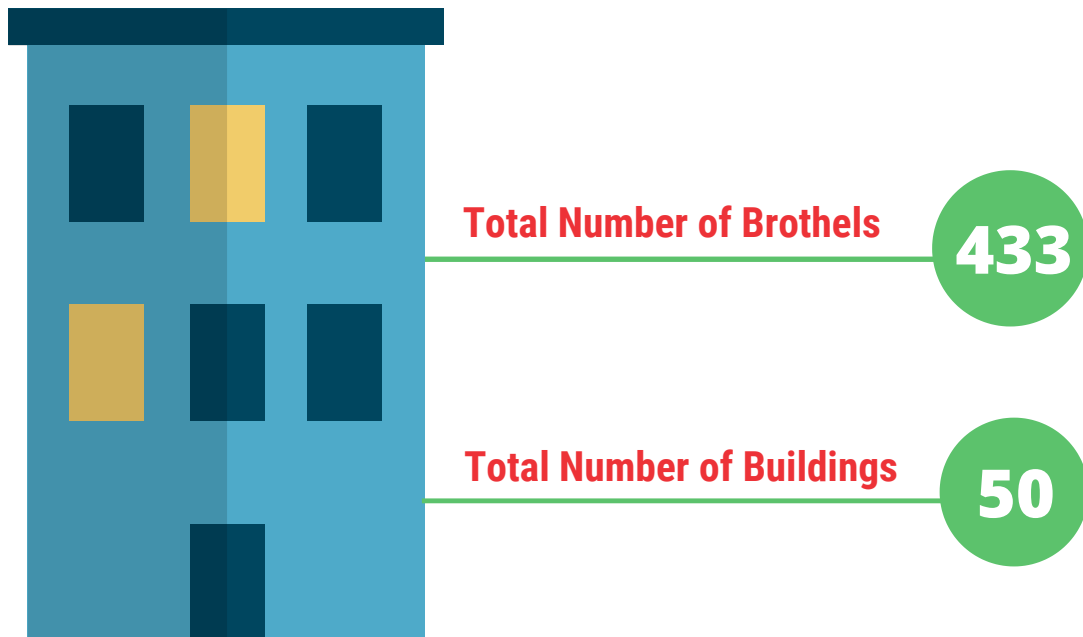
and colleges regularly. They also actively follow up with the mothers and keep them updated on the educational progress of their children. Besides this, the program team organizes study classes during the evening hours wherein qualified teachers provide support to school/college-going students in their studies and project work. Prerana also collaborates with other donors to provide educational scholarships for students who want to pursue advanced or professional degrees, and to those students who have to pay school/tuition/extra coaching fees. This program is deployed at all the Prerana NCCs through a dedicated team of social workers, teachers, and other resource persons.

## **About Red Light Area (RLA) Mapping**

Over the years, Prerana has witnessed significant changes in the RLAs. Since 2011, Prerana has been routinely mapping the RLAs of Kamathipura and Falkland Rd. Through this exercise, the team of Prerana's social workers has identified the changing structures and dynamics of the RLAs. Understanding this is crucial for planning welfare and developmental services and strategies. The annual RLA mapping is undertaken in the months of February and March in the RLAs where Prerana's NCC services are being provided.

Through this document, we hope to indicate the changes in the RLA of Kamathipura, in 2020-21.

# BROTHELS



- Prerana's Team noted that a total of 433 **brothels** are **currently functioning** in the **Kamathipura RLA** in 2021.
- A total of 50 **buildings** were covered in the 2021 RLA mapping exercise.

## COMMERCIAL & OTHER ESTABLISHMENTS

### 1. Grocers, Food Stalls etc.





**Paan/Bidi Shops**

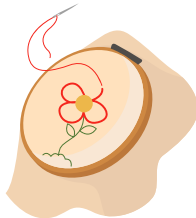
**26**



**Catering Services**

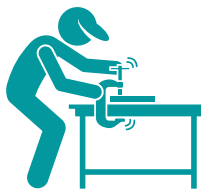
**13**

## 2. Manufacturing Units



**Zariwala**

**08**



**Metal Work (iron)**

**20**



**Bag Making**

**158**



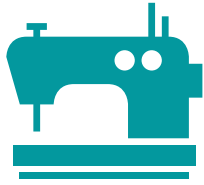
**Leather Shoes**

**08**



**Cap Making**

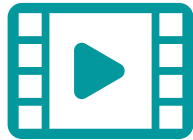
**16**



**Tailors**

**01**

### 3. Entertainment



**Video Parlor**

**01**

- Video parlors run in the RLA providing adult entertainment and were frequented mainly by men.

## SERVICES

### 1. Medical Facilities



**Medical Clinics**

**11**



**Pharmacies**

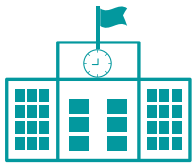
**05**



**BMC Health Posts**

**03**

## 2. Educational Facilities



**Pvt Schools and College**

**03**



**BMC School**

**02**

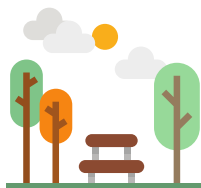
## 3. Civic Services



**Police Station**

**01**

## 4. Other Services



**Public Park**

**02**



**Bus Stop**

**02**



## 5. Non-Government Organisations



NGO

12

NGO	Services	Target Group
<b>SAI NGO</b> ( <i>office has shifted to Byculla</i> )	health care services to women in the sex trade and to people suffering with HIV and their children, vocational training and educational sponsorship	women, children and youth
<b>Navjeevan</b>	day care and night care shelter facility away from the red-light area, de-addiction programs, counselling services, health awareness, skill development and training	women, children and youth
<b>Bombay Teen Challenge</b>	day and night care center for children, vocational training, educational opportunities, lunch provided to women suffering with HIV or any other disease	women, children and youth
<b>Apne Aap</b>	day care shelter, pre-school education, study class for girls, educational sponsorship, self-help group, grocery distribution to HIV positive women, health care services, vocational training	women, children and youth
<b>YWCA</b>	pre-school, counselling and vocational training	women and children
<b>Asha Mahila Sanstha</b>	health care services to women, work with people living with HIV/AIDS, provide medical facilities to women suffering from TB, HIV or any other disease, distribute condoms to women in RLA	women

NGO	Services	Target Group
<b>Salvation Army</b>	day care center (both boys and girls) and night care center (only for boys), pre-school, medical services to children and women	women and children
<b>Sahas Foundation</b>	social justice, education, health, employment, civic rights	women and children
<b>Savera NGO</b>	provide vocational training and job placement for women	women
<b>Oasis India</b>	health care services, educational sponsorship, day and night care shelter, study class for children, vocational training, job placement and boys group home	women, children and youth
<b>Mumbai Smiles (only preschool exists, office has shut down)</b>	pre school and day care for young children, psychological support, vocational training for women	women and children
<b>Jyoti Kalash</b>	conduct community outreach, enrollment of children in Children's Home	women and children
<b>Living Water Mission</b>	prayer services, distribute ration to women	women



### DISCLAIMER :

The information shared in this document has been derived from the residents/women/persons living in the mentioned RLA and are associated with Prerana through its various interventions and work done in the area. The Prerana team has attempted to maintain a high degree of accuracy while creating this resource. The document is primarily for informational purposes only.

## Data Collection

Sheetal Jadhav

Chhaya Jagtap

Jyoti Sasane

## Data Tabulation

Mugdha Dandekar

## Design

Azra Qaisar



[www.fighttrafficking.org](http://www.fighttrafficking.org)

*Your trusted knowledge partner in the fight against  
human trafficking*

**June 2021**

Our mailing address is:

**fighttraffickingindia@gmail.com**

**Copyright © 2021 Prerana, All rights reserved.**

